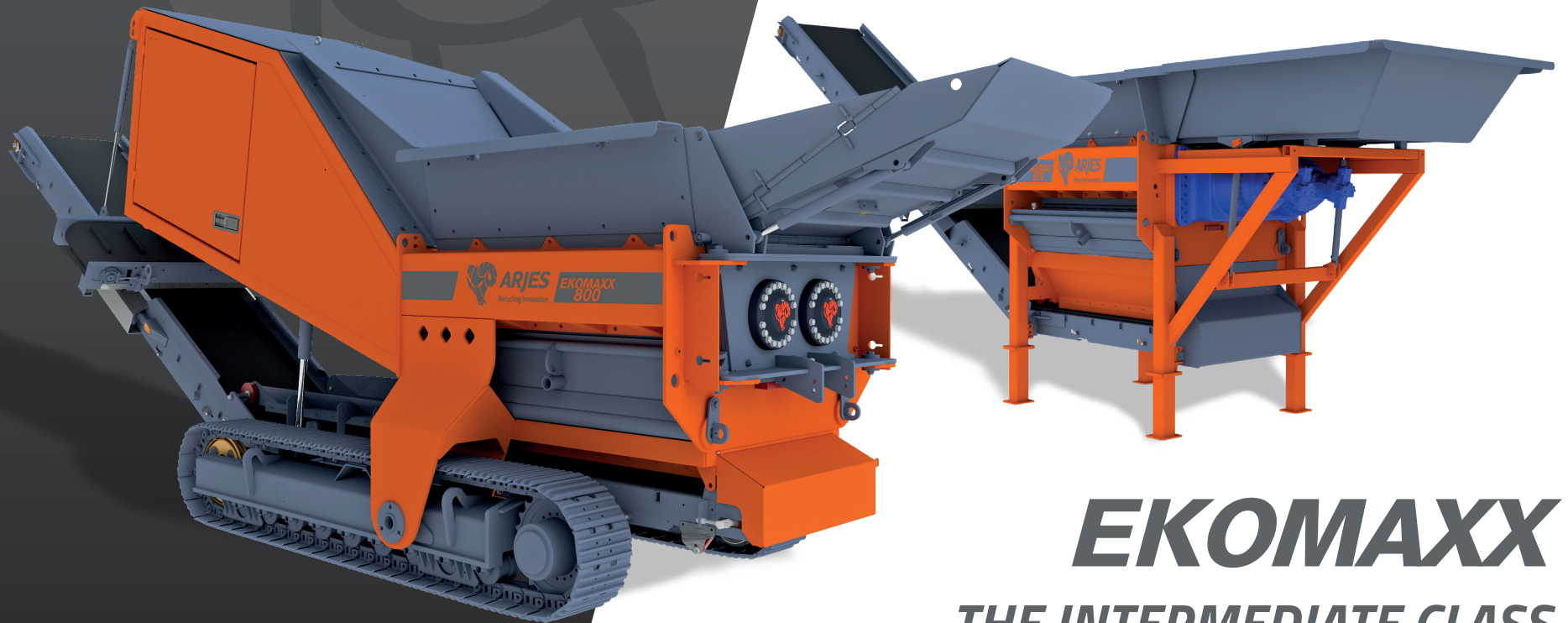


 EN



**ARJES**

Recycling Innovation



***EKOMAXX***  
***THE INTERMEDIATE CLASS***



[www.arjes.de](http://www.arjes.de)

# OUR SHREDDERS OF THE ARJES INTERMEDIATE CLASS

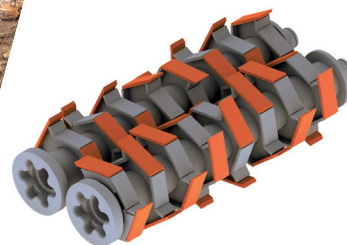


When choosing the right machine, our customers are usually faced with the question of which shredder is right for their specific requirements. Therefore, we have divided our unique double-shaft shredders into three product lines to help you make the right decision.

## Fields of application EKOMAXX class

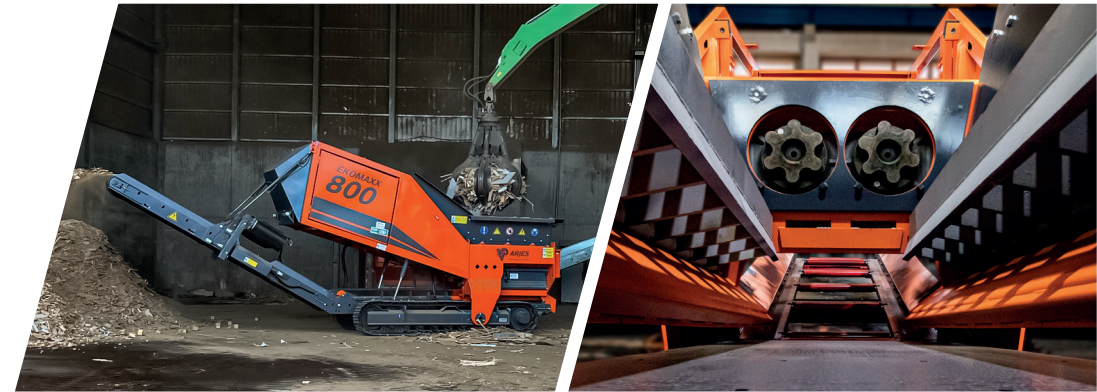
-  Waste Wood & Biomass
-  Household & Commercial Waste

PADDLE SHAFTS



Find out more about our applications and tool shafts in the brochure  
**RECYCLING IS OUR GLOBAL SOLUTION**





## PRODUCT LINE **EKOMAXX**

In the EKOMAXX class, the concept of economic sustainability is at the forefront of machine development. ARJES' goal is clearly defined: "Optimum cost-benefit ratio for the maximum benefit of our customers and users". These are mainly to be found in composting and wood processing companies as well as in the processing of domestic and commercial waste. The mobile shredder offers advantages that are a part of the standard ARJES design. These include the track system, the revolutionary shaft quick-change system, an innovative SCU control system and a paddle shaft design that guarantee the customer long service life and durability.

For all customers with special requirements regarding exhaust and noise emissions, the stationary electric version of the EKOMAXX class is the right solution. Our Electric-Power-Unit machines are particularly energy-saving and efficient for the user, as they can be used for shredding the most difficult materials with significantly less maintenance.

The main areas of application are in the processing of green waste, waste wood and roots, as well as in the processing of household, commercial and bulky waste. The shredding of old tyres, paper and cardboard is also possible without any problems with our intermediate class.



THROUGHPUT RATES*	
Biomass	Ø 70 – 80 t/h
Waste Wood	Ø 40 – 50 t/h
Waste & Plastics	Ø 25 – 30 t/h
Tyres	Ø 10 t/h

\*Depends on the equipment of the shredder, the shaft configuration and the optimum material feed. The performance data given are average values without guarantee!

# EKOMAXX 800 *The highlights of the mobile intermediate class in detail*

## REVERSING FAN

**Included!** Hydraulic adjustable and self-cleaning fan for ideal air circulation in the engine compartment



## SHREDDING UNIT

Large receiving hopper and double shaft system, incl. **quick-change cassette** and optionally available **tilting hopper**



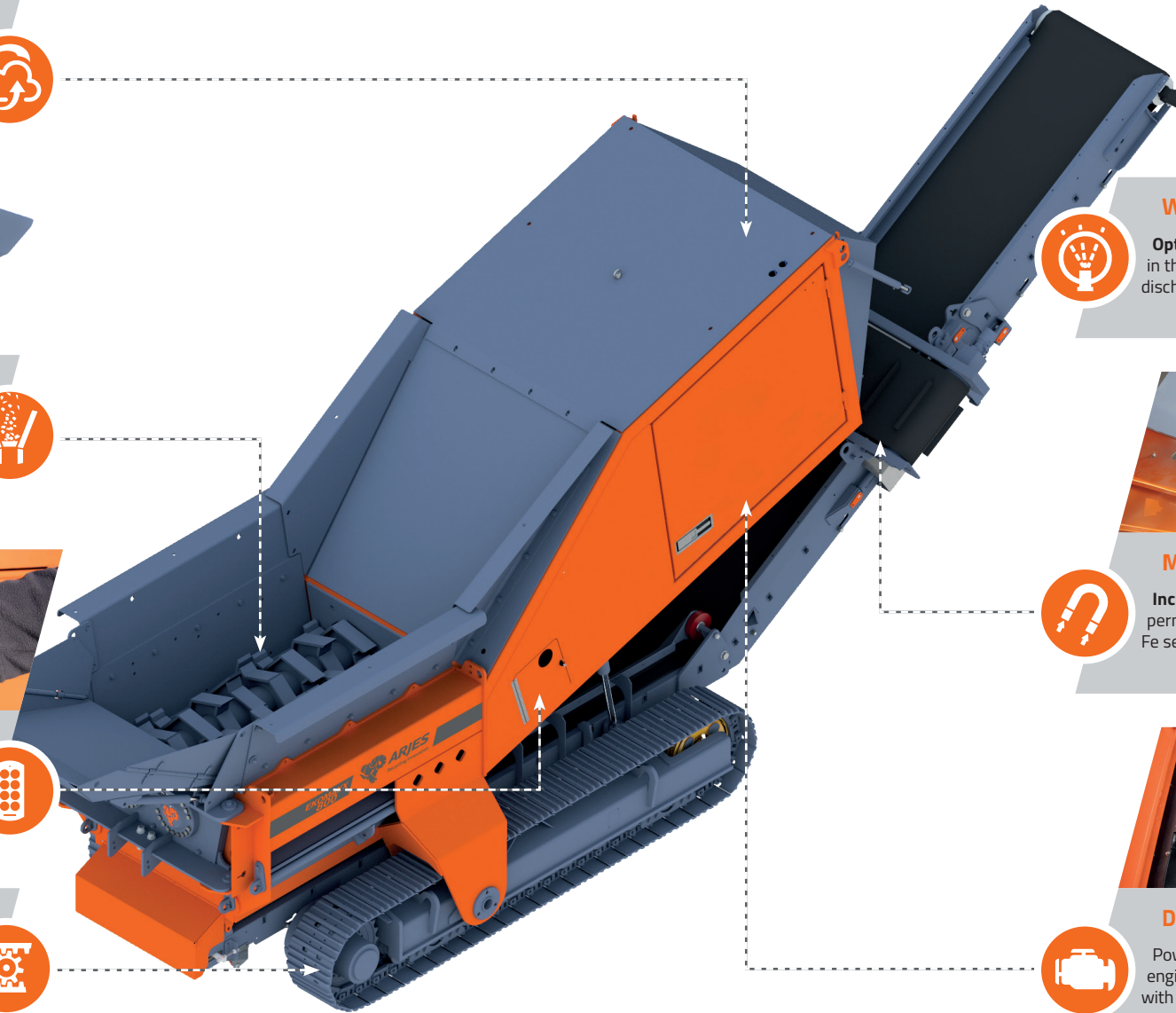
## SCU-CONTROL SYSTEM

Including **remote control** for moving and operating the entire shredder



## TRACK SYSTEM

For excellent off-road mobility; **optionally available rubber tracks** protects against ground damage



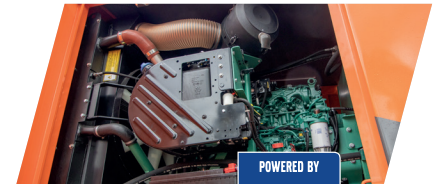
## WATER SPRINKLER

**Optional!** Reduction of dust in the feeding area and at the discharge belt



## MAGNET

**Included!** Height-adjustable permanent magnet for efficient Fe separation



## DRIVE

Powerful **VOLVO PENTA** diesel engine for low fuel consumption with highest efficiency



POWERED BY  
**VOLVO PENTA**



## TECHNICAL DATA

### DIMENSIONS

Version	Track system
Length (mm)	9.300* / 8.100 (Transport)
Width (mm)	2.450 / 2.450 (Transport)
Height (mm)	4.000 / 3.100 (Transport)
Total weight (kg)	21.000*

### DRIVE

#### EU / US

#### ROW\*\*

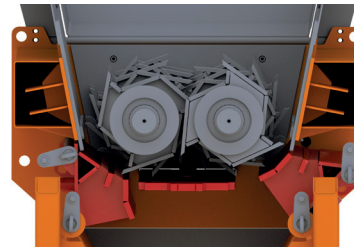
Engine (Volvo Penta)	TAD 883 VE	TAD 853 VE
Emission standard	Stage V	Stage III A
Power (kW / HP)	235 / 320	
Fuel capacity (l)	400	
Gearbox	Bonfiglioli	

### DISCHARGE BELT

Discharge height (mm)	3.300
Width (mm)	1.000
Included	Over-belt magnet

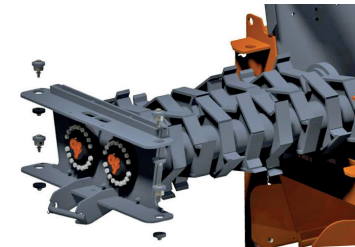
### SHREDDING UNIT

Hopper volume (m <sup>3</sup> )	3,00 / 4,50 (incl. tilting hopper)
Shaft length (mm)	2.000
Shaft diameter (mm)	680
Weight (kg / cassette)	2.500
Rotation speed (rpm)	approx. 42



### Mechanically adjustable side combs

The side combs can be opened or closed, depending on material and customer requirements; decreasing the output size or increasing the throughput rate.



### Quick change system for shafts

Easy installation and quick removal of shafts, for easier maintenance, refurbishment and changing of shredding shafts, which increases productivity.



### Hydraulically adjustable tilting hopper

Loads with a wheel loader; shovel width of up to 3.60 m (10 ft): The shredding unit can be equipped with a 180° adjustable tilting hopper.

\* Specifications without optionally available tilting hopper; \*\* Rest of the world (country-specific requirements)

# EKOMAXX 800 e-pu *The highlights of the stationary intermediate class in detail*

## CONTROL SYSTEM

Operation via **remote control**; optional integration into complete systems possible according to customer requirements



## SHREDDING UNIT

Equipped as standard with large-volume **tilting hopper**; Loads with a wheel loader; shovel width of up to 4.60 m



## STATIONARY

Used as an individual machine or optional integration in recycling plants according to customer requirements



## DISCHARGE BELT

**Optional!** 1,000 mm wide and 7,000 mm long discharge belt for optimum material discharge



## MAGNET

**Optional!** Height-adjustable permanent magnet for effective Fe-separation



## DRIVE

Powerful **electric engine** performs with high efficiency and low energy costs





## TECHNICAL DATA

### DIMENSIONS

Version	Stationary
Shredding Unit	
Length (mm)	4.600*
Width (mm)	2.300
Height (mm)	3.000
Control Unit	
Length (mm)	2.600
Width (mm)	1.600
Height (mm)	2.700
Total weight (kg)	approx. 18.000

### DRIVE

Engine	Electric
Power (kW)	250
Gearbox	Bonfiglioli

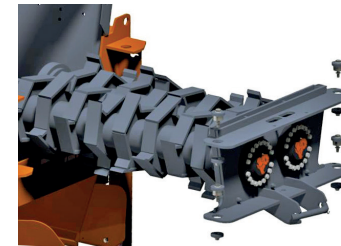
### SHREDDING UNIT

Hopper volume (m <sup>3</sup> )	4,00
Shaft length (mm)	2.000
Shaft diameter (mm)	680
Weight (kg / cassette)	2.500
Rotation speed (rpm)	approx. 42



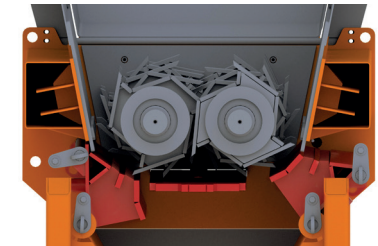
#### Separate drive and control unit

Due to separate placement of the shredding and control unit (max 6 meters in between) there is significant less vibration to the control system. Additionally, dust and dirt are reduced.



#### Quick change system for shafts

Easy installation and quick removal of shafts, for easier maintenance, refurbishment and changing of shredding shafts, which increases productivity.



#### Mechanically adjustable side combs

The side combs can be opened or closed, depending on material and customer requirements; decreasing the output size or increasing the throughput rate.

\* Specifications without discharge belt



**ARJES**  
Recycling Innovation

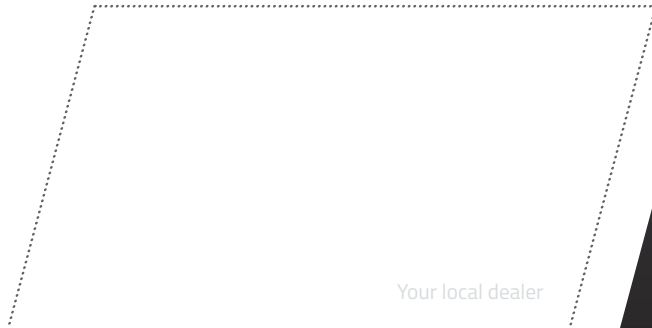
**ARJES GmbH**

Borntalstraße 9

D-36460 Krayenberggemeinde

✉ [info@arjes.de](mailto:info@arjes.de)

🌐 [www.arjes.de](http://www.arjes.de)



Your local dealer

Disclaimer: We reserve the right to make technical changes, misprints and errors. All specifications refer to the standard version without optional features. Status: July 2023



## 5 CONVINCING ARGUMENTS FOR OUR INTERMEDIATE CLASS

- 1 Best price-performance ratio in its class**  
incl. standard attachments\* (e.g. reversing fan, magnet etc.)
- 2 Largest range of applications**  
Processing of many types of material with the toughest requirements (such as green waste, waste wood, household and commercial waste, tyres, etc.)
- 3 Revolutionary shaft quick-change system**  
Shortens maintenance times, refurbishment and changing different shaft types for uninterrupted operation
- 4 Hydraulically adjustable tilting hopper**  
Higher loading capacity and operability when loading the shredder
- 5 Innovative SCU plug-and-play control**  
Predefined shredding programs that control rotation and speed of shafts for user-friendly operability

\*only available for mobile machines