



McIntyre

The gold standard in recycling systems

McIntyre 500 CAT

Alligator Shear



McIntyre 500 SH CAT Shear

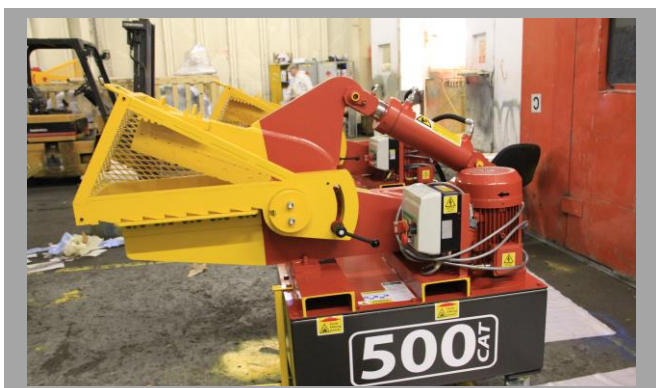
The 500 CAT SH is designed for those needing just a bit more blade length and increase in cutting force

Versatile

The 500 CAT gives customers just a bit more blade length and power without a big price increase. It is powerful enough to handle most non ferrous cleaning and sizing operations, and can also be fitted with an optional bracket enabling it to assist when processing catalytic converters.

Long-lasting

In common with all JMC shears, the 500 CAT has been designed and built to last. Blades are deep hardened for extended life, hardened chrome rod is used in the hydraulic ram, and components are all selected according to their quality over and above their price.



Why is this the best for you?

- safe
- easy to use
- powerful
- 120 tonne shear force

About McIntyre Recycling Systems & Services

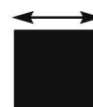
McIntyre is the gold standard in recycling systems and services, with 27,000 machines installed worldwide and a reputation for the widest and best-performing range of solutions for metal, waste, cars and aluminium. With scrap metal roots extending back to 1872, we have an unrivalled understanding of the challenges faced by scrap merchants, waste managers, car breakers, manufacturers, foundry managers and others with recycling responsibilities. As a result, the McIntyre name has become synonymous with innovative, problem-solving designs, robust products that deliver the best return on investment, and a knowledgeable, friendly and helpful service.

Technical Data

Machine dimensions:	1690 x 712 x 1400mm
Blade Length:	508mm / 20"
Tip to tip opening:	225mm / 8.9"
Shearing height:	934mm / 36.75"
Weight with oil:	990kg
Oil capacity:	200 Litres / 44 Gallon
Noise Level:	78 +/- 3dBA
Cut control:	Single Cut repeating
Standard Electrical Requirements:	32A / 3ph / 380-415v / 50Hz
Power Rating:	11 kW
Motor speed:	1450 rpm
Max system Pressure:	3800 psi
Max Shear force:	130 Tonnes
Fully open cut speed:	8 dry cycle cuts per min
40% Stroke cut speed:	21 dry cycle cuts per min
Cutting Capacity:	63mm (Round Bar) 54mm (Square Bar)



Round Bar



Square Bar

While we make every effort to ensure that our information is correct, technical data is for guidance only and subject to change. If any dimension or performance indication is important to you, please check with us before ordering.

© 2014 Copyright JMC Recycling Systems Ltd.
All rights reserved

Economical

As well as being a quality product in itself, the 500 is cheap to run and maintain. Its blades, for example, cut on all four edges so can be removed, rotated 180 degrees and re-fitted to expose each edge in turn before needing to be replaced.